

SIGNATURE

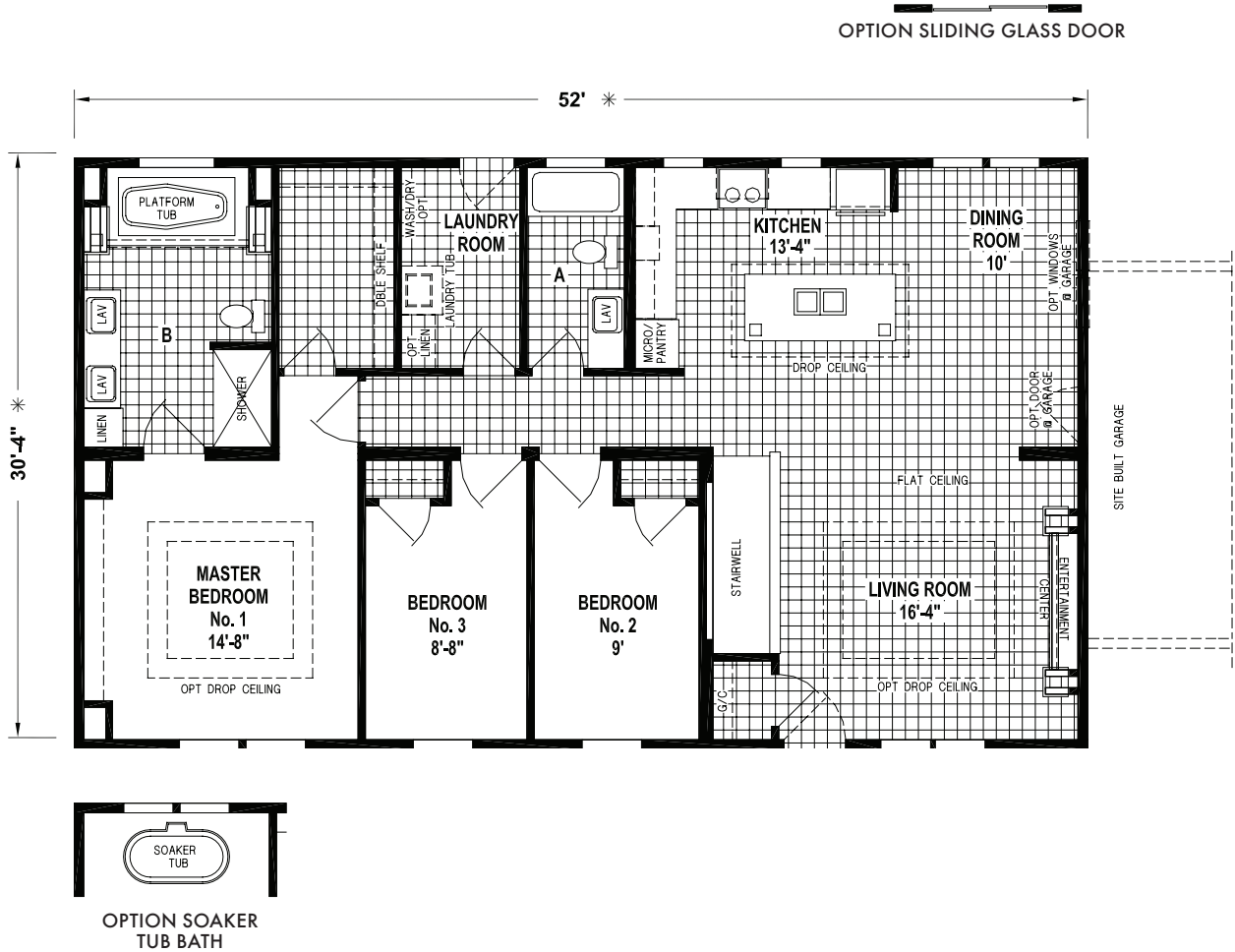
MODULAR HOME SERIES BY SKYLINE

SIGNATURE

MODULAR HOME SERIES

D925MA

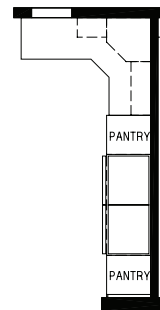
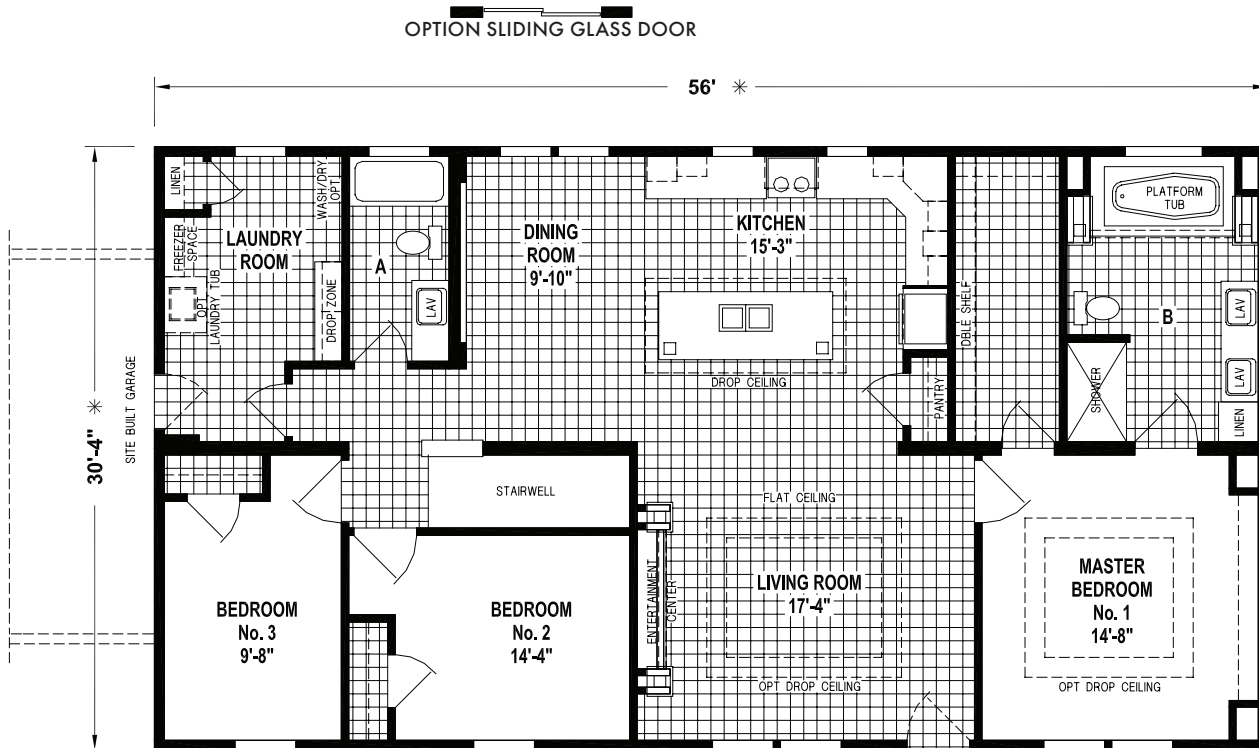
52' x 32' - 1,577 SQ. FT. - 3 BEDROOMS - 2 BATHS



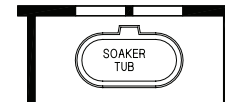
The Signature series has been designed to reflect the needs of families through high-end craftsmanship and quality – with affordable amenities and distinctive details. Manufactured in Arkansas City, Kansas and backed by over 65 years of manufacturing experience, a 15-month warranty and stellar customer service – take a look for yourself to see why the Signature series by Skyline Homes is the right decision for you and your family.

D930MA

56' x 32' - 1,698 SQ. FT. - 3 BEDROOMS - 2 BATHS



OPTION DOUBLE REFRIGERATOR



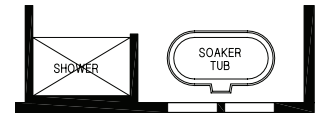
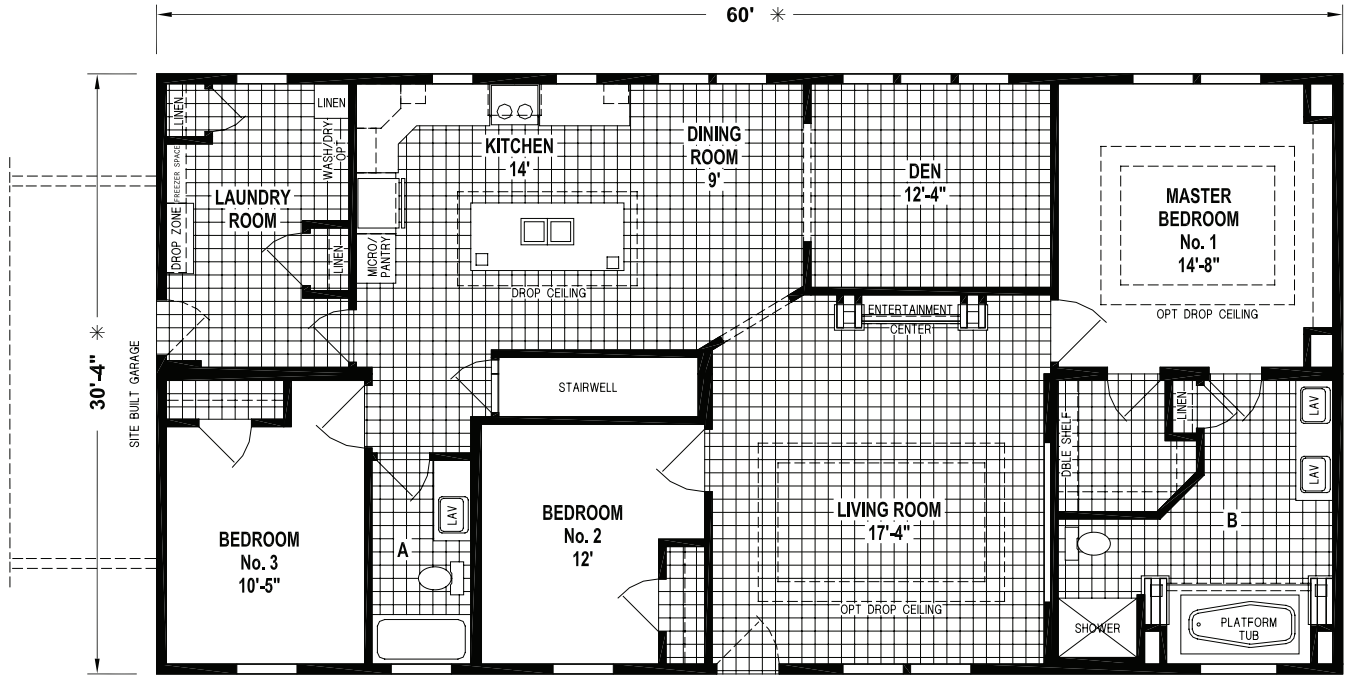
OPTION SOAKER TUB BATH

SKYLINE HOMES -
COMMITTED TO QUALITY
CRAFTSMANSHIP, VALUE &
CUSTOMER SATISFACTION

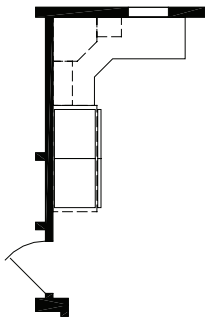
32' SERIES

D945MA

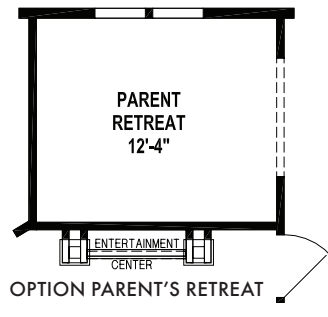
60' x 32' - 1,820 SQ. FT. - 3 BEDROOMS - 2 BATHS



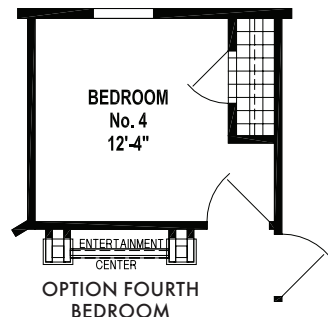
OPTION SOAKER TUB BATH



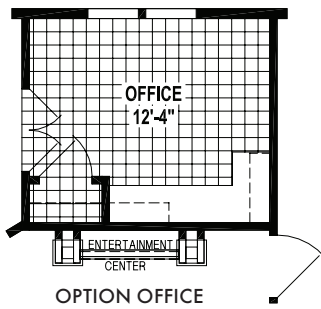
OPTION DOUBLE REFRIGERATOR



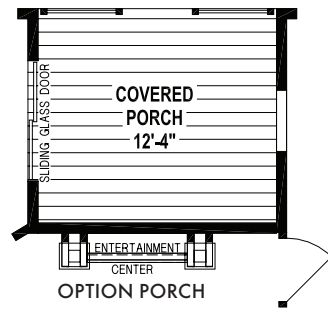
OPTION PARENT'S RETREAT



OPTION FOURTH BEDROOM



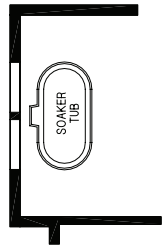
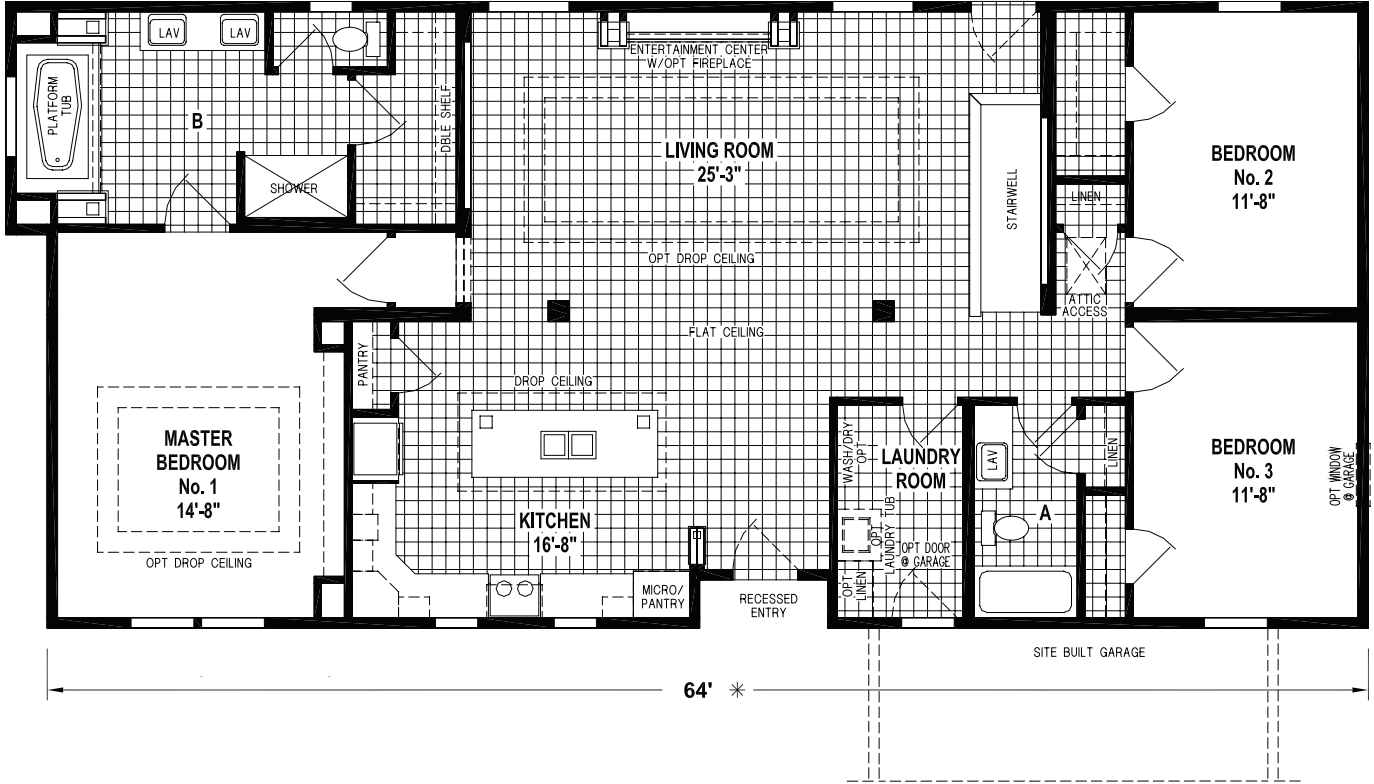
OPTION OFFICE



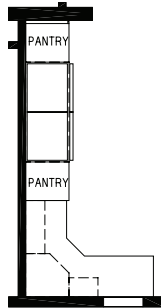
OPTION PORCH

D960MA

64' x 32' - 1,932 SQ. FT. - 3 BEDROOMS - 2 BATHS



OPTION SOAKER TUB BATH



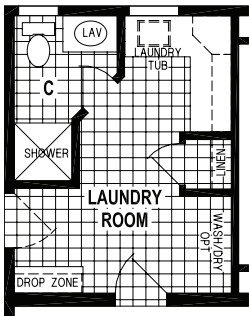
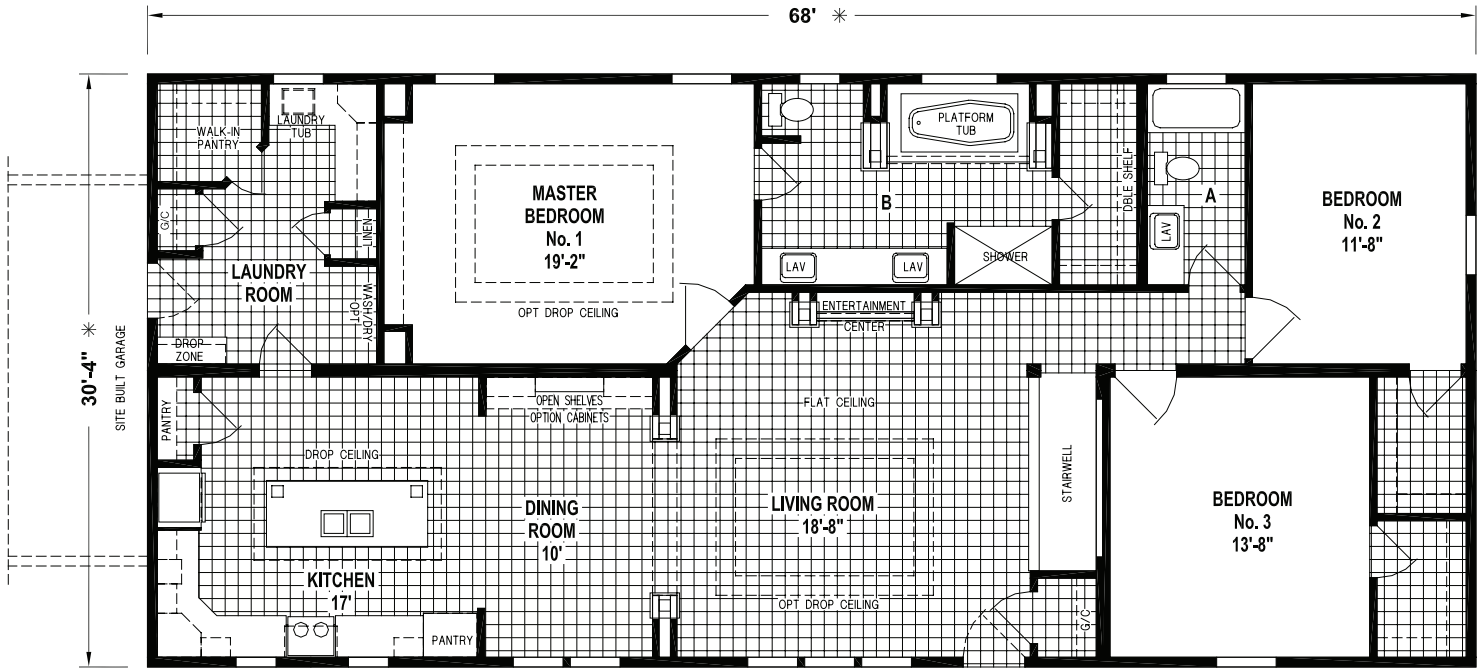
OPTION DOUBLE REFRIGERATOR

All Skyline homes are covered by our no-nonsense 15-month warranty, the very best in the industry. It's our way of showing our customers how much we believe in the quality we build into every Skyline home. Our warranty gives new homeowners the assurance that comes from working with a company with more than six decades of building.

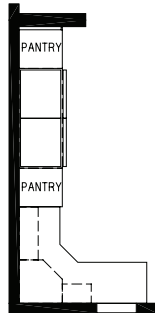
32' SERIES

D975MA

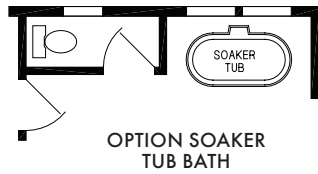
68' x 32' - 2,062 SQ. FT. - 3 BEDROOMS - 2 BATHS



OPTION 3/4 BATH



OPTION DOUBLE REFRIGERATOR



OPTION SOAKER TUB BATH



Some features shown may be optional.

SIGNATURE

STANDARD FEATURES

CONSTRUCTION

- 9' Sidewall Height
- Continuous Plywood Marriage Line Beam
- 2 x 4 Interior Wall Construction
- 2 x 6 Exterior Wall Construction
- 5/12 Roof Pitch with 40# Roof Load
- 2 x 10 Floor Joists, 16" O. C. with Double Perimeter
- Thermo zone II Insulation (R-30 Ceiling and R-19 Walls - Omit Floor)

PLUMBING/ELECTRICAL

- 200 Amp Service with 12-2 Wiring Throughout
- 2-Bulb Fixtures in Bedrooms and Utility
- Ceiling Fan in Living Room
- (4) Hanging Light Fixtures in Dining Room
- (2) Exterior Receptacle GFI
- Arc Fault Interrupter at All Bedrooms
- (2) Exterior Frost-Free Faucets
- Whole House Water Shut-Off and All Fixtures
- Drain and Water Lines Stub Thru Floor
- PEX Water Lines

EXTERIOR

- Vertical Smartside Panel Siding
- Smartside Fascia and Soffit
- OSB Sheathing with House Wrap
- 30-Year Roof Singles
- 36" Fiberglass Front and Rear Doors with 4-Lite
- Residential Single Hung Low-E Windows

INTERIOR

- Flat Ceilings
- Full Tape and Texture Drywall with Bullnose Corners Throughout
- 5 1/4" Base Trim
- Accent Wall in Living Room (per floor plan)
- Entertainment Center in Living Room
- LED Light Soffit at Master Bedroom
- Laminate Flooring Throughout (Except Bedrooms)
- Shaw "Macramé" Carpet with 1/2" Carpet Pad, Tack Strip and Carpet Bar in Bedrooms
- Painted Wood Shelving
- 1 1/2" Kiri-Wood Blinds

KITCHEN

- Modular Cabinet Construction
- Flat Panel Doors
- Wood Cabinet Stiles
- Drawer over Door Construction and Drawer Bank

- Soft Close Full Extension Drawer Guides
- Soft Close Cabinet Door Hinges
- Center Shelf in Base Cabinets
- Full Coverage Tile Backsplash
- Granite Island Top with Double Roundover Edge with (2) Base Pull Outs and Legs
- Crescent Edge Countertops
- Crown Molding at Cabinets
- Stainless Steel Undermount 8" Double Bowl Sink
- Waterfall Single Lever Faucet with Pull Down Spray
- LED Lights Throughout
- Pendant Lights at Island
- Under Cabinet LED Lights

APPLIANCES

- 21 Cu. Ft. Side by Side Refrigerator with Dispenser
- 30" Self Clean Electric Range
- 30" Glass Canopy Range Hood with Stainless Steel Chimney
- 4-Cycle Dishwasher
- Built-In Microwave Cabinet

BATHROOM(S)

- Modular Furniture Style Cabinet Construction
- Flat Panel Doors
- Wood Cabinet Stiles
- Crescent Edge Countertops
- Framed Decorative Mirror
- 1-Piece Fiberglass Tub/Shower with Radius Shower Rod and Curtain - Hall Bath
- Deck Tub at Master Bath
- Tile Shower with Recess Shampoo Niche at Master Bath
- 8" Rainfall Shower Head and 17" Arm
- 6" Subway Tile Backsplash
- Square China Lav Bowls with Overflow
- Single Lever Metal Faucet
- Comfort Height China Commodes
- Metal Shade Wall Light at Lavs
- Power Vent Fan with Light (Upgrade at Master)
- LED Lights at Tubs and Showers

HEATING/UTILITY

- Furnace, Heat Duct and Thermostat (By Others)
- Water Heater (By Others)
- Plumb for Washer
- Wire For Dryer
- Wood Shelving above Washer and Dryer

YOUR LOCAL SKYLINE RETAILER:



SINCE
1951

SKYLINE®

ARKANSAS CITY, KANSAS

WWW.SKYLINEHOMES.COM



For your comfort and safety, Skyline home designs are approved and inspected for conformance to federal standards.

**Dimensions stated to industry standards. Width and length dimensions are nominal and are not to be used for setup of home on site; consult selling retailers for exact specifications. Overall length does not include approximately four foot hitch. The square footage is approximate and based upon nominal exterior floor size.*

Room sizes are measured from floor ends and wall centers.

Because of progressive product improvement, all prices and specifications are subject to change without prior notice or obligation to Skyline Corporation. Your retailer, an independent contractor, who is not an agent of Skyline Corporation, is the party responsible for your purchase contract and any additions, deletions, alterations, or attachments made to or in your home.